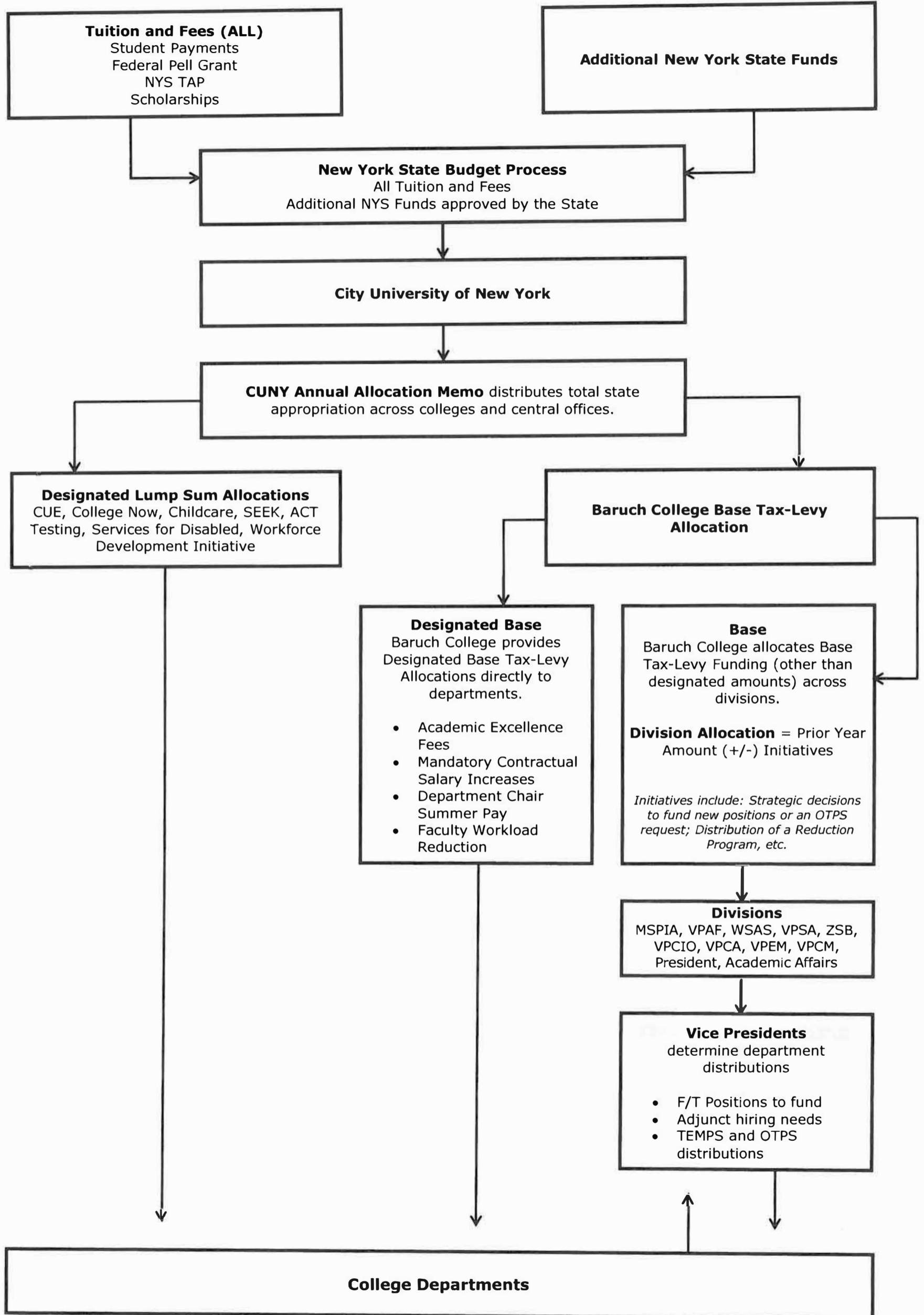


Tax-Levy Budget Authority Distribution Process



Tuition and Fees (ALL)
Student Payments
Federal Pell Grant
NYS TAP
Scholarships

Additional New York State Funds

New York State Budget Process
All Tuition and Fees
Additional NYS Funds approved by the State

City University of New York

CUNY Annual Allocation Memo distributes total state
appropriation across colleges and central offices.

Designated Lump Sum Allocations
CUE, College Now, Childcare, SEEK, ACT
Testing, Services for Disabled, Workforce
Development Initiative

**Baruch College Base Tax-Levy
Allocation**

Designated Base
Baruch College provides
Designated Base Tax-Levy
Allocations directly to
departments.

- Academic Excellence Fees
- Mandatory Contractual Salary Increases
- Department Chair Summer Pay
- Faculty Workload Reduction

Base
Baruch College allocates Base
Tax-Levy Funding (other than
designated amounts) across
divisions.

Division Allocation = Prior Year
Amount (+/-) Initiatives

*Initiatives include: Strategic decisions
to fund new positions or an OTPS
request; Distribution of a Reduction
Program, etc.*

Divisions
MSPIA, VPAF, WSAS, VPSA, ZSB,
VPCIO, VPCA, VPEM, VPCM,
President, Academic Affairs

Vice Presidents
determine department
distributions

- F/T Positions to fund
- Adjunct hiring needs
- TEMPS and OTPS distributions

College Departments